



SPORTS MEDICINE

B I O T E K

PROTESA
Medical supplies

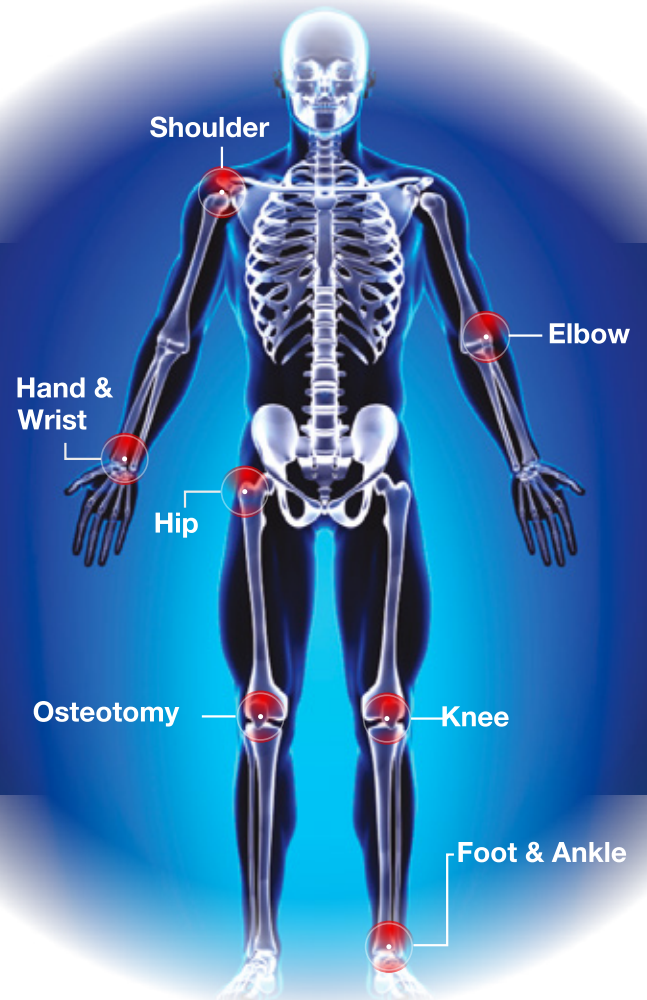
INDICE

ABOUT BOTEK	1
SHOULDER SPORTS MEDICINE	2
SLAP & BANKART REPAIR	3
ROTATOR CUFF REPAIR	4
BICEPS TENODESIS REPAIR	8
AC JOINT REPAIR	9
BIOFIBER	10
LATARJET/ CORACOID PROCESS TRANSFER	12
KNEE SPORTS MEDICINE	14
ACL-PCL RECONSTRUCTION	15
MENISCUS REPAIR	21
HIGH TIBIAL OSTEOTOMY	23

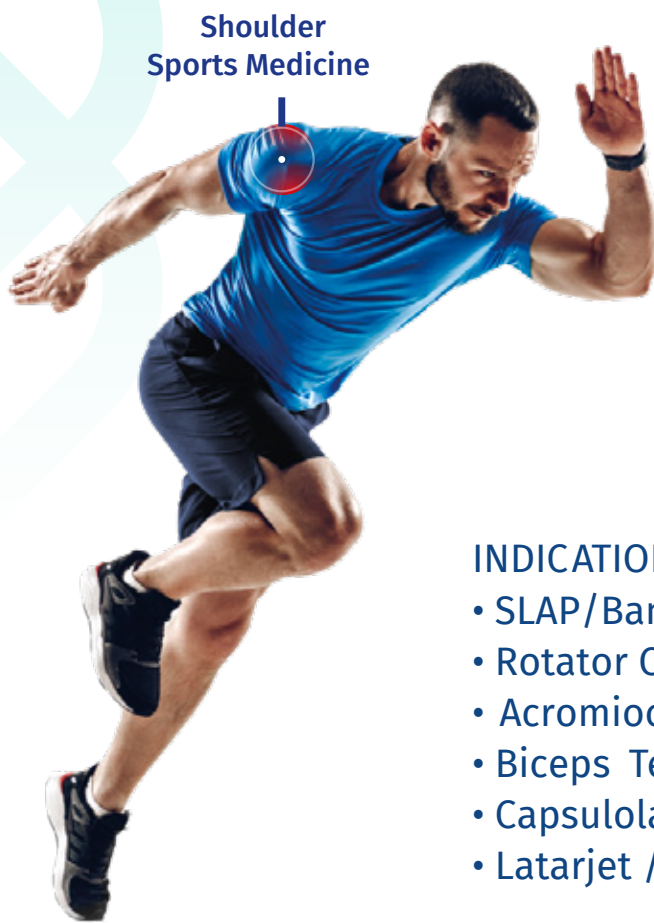


ABOUT BIOTEK

Biotek is a global medical device company with a strong focus on new product development in the most advanced orthopaedic sector: **SPORTS MEDICINE**



Shoulder Sports Medicine



Shoulder
Sports Medicine

INDICATIONS

- SLAP/Bankart Repair
- Rotator Cuff Repair
- Acromioclavicular Separation Repair
- Biceps Tenodesis Repair
- Capsulolabral Shift or Reconstruction
- Latarjet / Coracoid Process Transfer





SLAP & BANKART REPAIR

MINI-VIM® Ligament Anchor (Titanium) with & without needle



Ordering Information

- BAS-9001.28F MINI-VIM® Ligament Anchor, Titanium loaded with 1 pc Fiber; Dia. 2.8mm
- BAS-9040.28F MINI-VIM® Ligament Anchor, Titanium, loaded with 1 pc Fiber with needle, Dia. 2.8mm
- BAS-9031.35F MINI-VIM® Ligament Anchor, Titanium, loaded with 1 pc Fiber, Dia. 3.5mm
- BAS-9083.35F MINI-VIM® Ligament Anchor, Titanium, loaded with 1 pc Fiber with needle, Dia. 3.5mm

MINI-VIM PK® Ligament Anchor (PEEK) Single & Double Loaded



Ordering Information

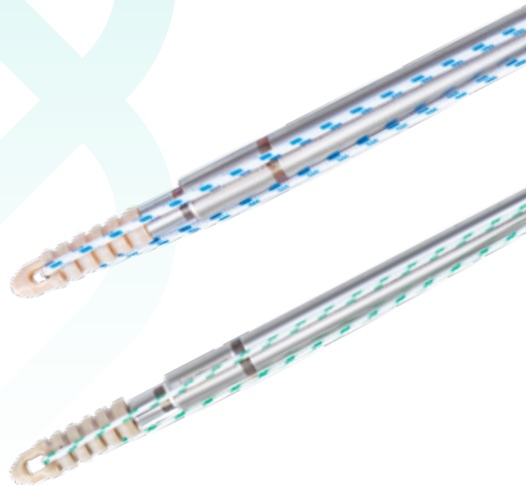
- BAS-9086.28F MINI-VIM PK® Ligament Anchor, PEEK, loaded with 1 pc Fiber, Dia 2.8mm
- BAS-9088.30F MINI-VIM® II PK Ligament Anchor, PEEK, loaded with 2 pc Fiber, Dia. 3.0mm
- BAS-9089.35F MINI-VIM® II PK Ligament Anchor, PEEK, loaded with 2 pc Fiber, Dia. 3.5mm





ROTATOR CUFF REPAIR

MINI-VIM® Ligament Anchor (PEEK, Knotless)



Ordering Information

- | | |
|--------------|---|
| BAS-9087.28F | MINI- VIM PK® Ligament Anchor
PEEK, Knotless, Dia. 2.8mm |
| BAS-9192.35F | MINI-VIM PK® Ligament Anchor
PEEK, Knotless, Dia. 3.5mm |

FIBERKNOT® Ligament Anchor (All Suture) Single & Double Loaded



Ordering Information

- | | |
|-------|--|
| 10026 | FIBERKNOT® Soft Ligament Anchor loaded with 1 pc Fiber
Dia. 1.5mm |
| 10027 | FIBERKNOT® Soft Ligament Anchor loaded with
1 pc Fiber Tape size 1.4, Dia. 1.5mm |
| 10028 | FIBERKNOT® Soft Ligament Anchor loaded with 2 pc Fiber
Dia. 1.8mm |
| 10029 | FIBERKNOT® Soft Ligament Anchor loaded with 1 pc Fiber
and 1 pc Fiber Tape size 1.4, Dia. 1.8mm |





ROTATOR CUFF REPAIR

SUPER-VIM® Ligament Anchor (Titanium) Double & Triple Loaded



Ordering Information

BAS-9002.50F	SUPER-VIM® Ligament Anchor, Titanium, loaded with 2 pc Fiber, Dia. 5.0mm
BAS-9041.50F	SUPER-VIM® Ligament Anchor, Titanium, loaded with 2 pc Fiber with needle, Dia. 5.0mm.
BAS-9030.50F	SUPER-VIM® III Ligament Anchor, Titanium, loaded with 3 pc Fiber, Dia. 5.0mm
BAS-9084.65F	SUPER-VIM® L Ligament Anchor, Titanium, loaded with 2 pc Fiber, Dia. 6.5mm
BAS-9115.65F	SUPER-VIM® L Ligament Anchor, Titanium, loaded with 2 pc Fiber with needle, Dia. 6.5mm.
10428	SUPER-VIM® L Ligament Anchor, Titanium loaded with 3 pc Fiber, Dia. 6.5mm





ROTATOR CUFF REPAIR

VIMFIX PK®

Ligament Anchor for Medial row (PEEK)

Double & Triple Loaded



BAS-9141.45F	VIMFIX-PK® Ligament Anchor, PEEK loaded with 2 pc Fiber, Dia. 4.5mm
BAS-9145.45F	VIMFIX-PK® III Ligament Anchor, PEEK loaded with 3 pc Fiber, Dia. 4.5mm
BAS-9180.45FT	VIMFIX-PK® Ligament Anchor, PEEK loaded with 1 pc Blue Fiber and 1 pc White-Blue Fiber Tape size 1.4, Dia. 4.5mm
BAS-9181.45FT	VIMFIX-PK® Ligament Anchor, PEEK loaded with 1 pc White-Blue Fiber and 1 pc Blue Fiber Tape size 1.4, Dia. 4.5mm
10092	VIMFIX-PK® Ligament Anchor, PEEK loaded with 2 pc Fiber with needle, Dia. 4.5mm
BAS-9223.45T	VIMFIX-PK® Ligament Anchor, PEEK loaded with 2 pc Fiber Tape size 1.4 (White-Black & Solid Blue), with needle, Dia. 4.5mm
BAS-9222.45T	VIMFIX-PK® Ligament Anchor, PEEK loaded with 2 pc Fiber Tape size 1.4 (White-Blue & Solid Black), with needle, Dia. 4.5mm
BAS-9090.55F	VIMFIX-PK® Ligament Anchor, PEEK loaded with 2 pc Fiber, Dia. 5.5mm
BAS-9091.55F	VIMFIX-PK® III Ligament Anchor, PEEK loaded with 3 pc Fiber, Dia. 5.5mm
BAS-9182.55FT	VIMFIX-PK® Ligament Anchor, PEEK loaded with 1 pc Blue Fiber and 1 pc White-Blue Fiber Tape size 1.4, Dia. 5.5mm
BAS-9183.55FT	VIMFIX-PK® Ligament Anchor, PEEK loaded with 1 pc White-Blue Fiber and 1 pc Blue Fiber Tape size 1.4, Dia. 5.5mm
10039	VIMFIX-PK® Ligament Anchor, PEEK loaded with 2 pc Fiber with needle, Dia. 5.5mm
BAS-9224.55T	VIMFIX-PK® Ligament Anchor, PEEK loaded with 2 pc Fiber Tape size 1.4 (White-Blue & Solid Black), with needle, Dia. 5.5mm
BAS-9225.55T	VIMFIX-PK® Ligament Anchor, PEEK loaded with 2 pc Fiber Tape size 1.4 (White-Black & Solid Blue), with needle, Dia. 5.5mm





ROTATOR CUFF REPAIR

VIMFIX -LR® Ligament Anchor for Lateral Row (Knotless)



Ordering Information

BAS-9092.55F	VIMFIX®-LRP Ligament Anchor, PEEK, knotless, Dia. 5.5mm
BAS-9142.475F	VIMFIX®-LRP Ligament Anchor, PEEK, knotless, Dia. 4.75mm
BAS-9136.55F	VIMFIX®-LRT Ligament Anchor, PEEK, knotless, self-tapping, metal tip, Dia. 5.5mm
BAS-9143.475F	VIMFIX®-LRT Ligament Anchor, PEEK, knotless, self-tapping, metal tip, Dia. 4.75mm

FIBERKNOT® Ligament Anchors (All Suture) Double & Triple Loaded



Ordering Information

10031	FIBERKNOT® Soft Ligament Anchor loaded with 2 pc Fiber, Dia. 2.9mm
10032	FIBERKNOT® Soft Ligament Anchor loaded with 1 pc Fiber and 1 pc White-Blue Fiber Tape size 1.4, Dia. 2.9mm
10033	FIBERKNOT® FIBERKNOT® Soft Ligament Anchor loaded with 1 pc Fiber and 1 pc White-Black Fiber Tape size 1.4, Dia. 2.9mm
10034	FIBERKNOT® FIBERKNOT® Soft Ligament Anchor loaded with 2 pc Fiber Tape size 1.4 (White-Blue & Solid Black), Dia. 2.9mm
10035	FIBERKNOT® FIBERKNOT® Soft Ligament Anchor loaded with 2 pc Fiber Tape size 1.4 (White-Black & Solid Blue), Dia. 2.9mm
10052	FIBERKNOT® FIBERKNOT® Soft Ligament Anchor loaded with 2 pc Fiber with needle, Dia. 2.9mm
10059	FIBERKNOT® FIBERKNOT® Soft Ligament Anchor loaded with 3 pc Fiber, Dia. 2.9mm
10123	FIBERKNOT® Soft Ligament Anchor loaded with 2 pc Fiber Tape size 1.4 (White-Black & Solid-Blue), with needle, Dia. 2.9mm





BICEPS TENODESIS REPAIR

VIMFIX®- BT Ligament Anchor (Peek, **Knotless**)



Ordering Information

- BAS-9093.50F VIMFIX®-BT Ligament Anchor, PEEK, knotless, Dia. 5.0mm
- BAS-9094.60F VIMFIX®-BT Ligament Anchor, PEEK, knotless, Dia. 6.0mm
- BAS-9095.70F VIMFIX®-BT Ligament Anchor, PEEK, knotless, Dia. 7.0mm
- BAS-9096.80F VIMFIX®-BT Ligament Anchor, PEEK, knotless, Dia. 8.0mm

AK-FIX Fixation Button



Ordering Information

- 10104 AK-FIX Fixation Button
- 10144 Suture Passing Insertion for AK-FIX Fixation Button

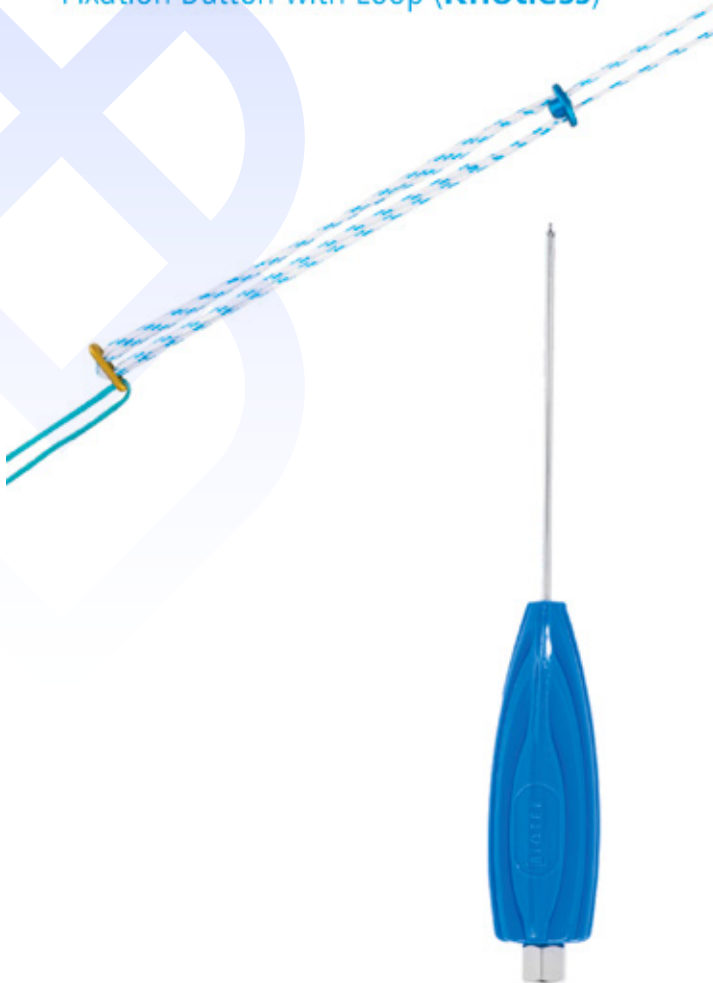




AC JOINT REPAIR

BUTTONFIX®-F

Fixation Button with Loop (**Knotless**)



Ordering Information

- 10063 BUTTONFIX®-F Fixation Button with Loop For Syndesmosis Repair
- 10403 BUTTONFIX®-F Fixation Button with Loop loaded with inserter

AC-FIX™

Fixation button



Ordering Information

- BAK-7003AF AC-FIX™ Fixation Button





TAPE



Ordering Information

- BF-2W BioFiber® Fiber USP Size 2 with MO-6 needle White, Len. 36"
- BF-2WC BioFiber® Fiber USP Size 2 with MO-6 needle, White-Blue, Len. 36"
- BF-2WK BioFiber® Fiber USP Size 2 with MO-6 needle, White-Black, Len. 36"
- BF-4IN1.S2 BioFiber® Fiber USP Size 2 with 40mm Taper cut needle, Len. 36" Pack contains 4 units (White, White-Blue, White-Black & Solid Blue)
- BF-5WC BioFiber® Fiber USP Size 5 with MO-6 needle White-Blue, Len. 36"
- BF-5WK BioFiber® Fiber USP Size 5 with MO-6 needle White-Black, Len. 36"
- BF-WWB BioFiber® Fiber USP Size 2 Len. 36" Pack contains (White with needle & White-Blue with needle)
- 10068 BioFiber® Fiber USP Size 2-0 White, Len. 75cm
- 10069 BioFiber® Fiber USP Size 0 White, Len. 75cm

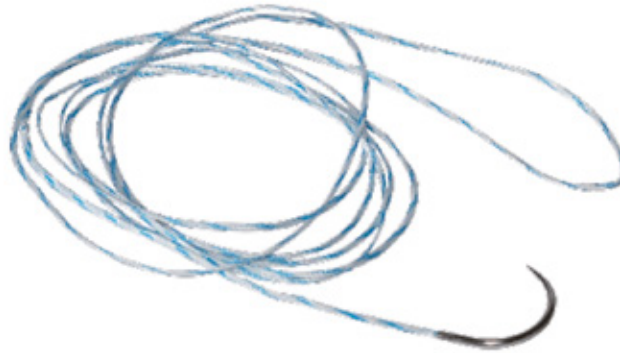
Ordering Information

- BF-2BST BioFiber® Fiber Tape, size 2 White-Black, Len. 39"
- BF-2ST BioFiber® Fiber Tape Size 2 White-Blue, Len. 39"
- 10090 BioFiber® Fiber Tape Size 2 with MO-6 needle White-Blue, Len. 39"
- 10091 BioFiber® Fiber Tape Size 2 with MO-6 needle White-Black, Len. 39"
- 10022 BioFiber® Fiber Tape Size 1.4 White-Blue, Len. 39"
- 10024 BioFiber® Fiber Tape, size 1.4 White-Black, Len. 39"
- 10126 BioFiber® Fiber Tape, size 1.4 with MO-6 needle White-Blue, Len. 39"
- 10128 BioFiber® Fiber Tape, size 1.4 with MO-6 needle White-Black, Len. 39"





LOOP



Ordering Information

BF-2WSB BioFiber® Fiber Loop, Size 2 with straight needle,
Len. 6cm White-Blue, Len. 24"

BF-2WNC BioFiber® Fiber Loop, Size 2 with curved needle White-Blue, Len. 24"





SHOULDER SPORTS MEDICINE

SHOULDER ARTHROSCOPY INSTRUMENTATION



BIOTRAC LD Kit

Assembly for Lateral Decubitus
Shoulder Positioning



Ordering Information

BAS-9195 Biotrac LD Kit Assembly for shoulder positioning
(Lateral Decubitus Position)





LATARJET/ CORACOID PROCESS TRANSFER

BioLatarjet®
Open Latarjet Procedure



BioLatarjet®
Open Latarjet Procedure



Ordering Information

- BAL-26.28.FH LCS Cannulated Flat Head Screw, Self-Tapping, Dia. 3.75mm, Len. 28mm
- BAL-26.30.FH LCS Cannulated Flat Head Screw, Self-Tapping, Dia. 3.75mm, Len. 30mm
- BAL-26.32.FH LCS Cannulated Flat Head Screw, Self-Tapping, Dia. 3.75mm, Len. 32mm
- BAL-26.34.FH LCS Cannulated Flat Head Screw, Self-Tapping, Dia. 3.75mm, Len. 34mm
- BAL-26.36.FH LCS Cannulated Flat Head Screw, Self-Tapping, Dia. 3.75mm, Len. 36mm
- BAL-26.38.FH LCS Cannulated Flat Head Screw, Self-Tapping, Dia. 3.75mm, Len. 38mm
- BAL-26.40.FH LCS Cannulated Flat Head Screw, Self-Tapping, Dia. 3.75mm, Len. 40mm



Knee Sports Medicine



Knee

Osteotomy

INDICATIONS

- ACL Reconstruction
- PCL Reconstruction
- Posterior Oblique Ligament Repair
- MCL Repair/LCL Repair
- Iliotibial Band Tenodesis Reconstruction
- Medial Patellofemoral Ligament Reconstruction
- Patellar Ligament & Tendon Repair
- Joint Capsule Closure
- Vastus Obliquus Muscle Advancement
- Meniscus Repair Inside Out
- Meniscus Repair All Inside
- High Tibial Osteotomy





ACL-PCL RECONSTRUCTION

BUTTONFIX®

Fixation Button with Adjustable Loop



Ordering Information

- BAK-7195 BUTTONFIX® Fixation Button with Adjustable Loop
- 10447 BUTTONFIX® Fixation Button with Adjustable Loop with fiber tape size 2

ONBUTTON CL®

Fixation Button with Closed Continuous Loop



Ordering Information

- BAK-7001C.12* ONButton CL® Fixation Button, loop size 12mm Pulling Fiber: White-Blue, Flipping Fiber: Green
- BAK-7001C.15 ONButton CL® Fixation Button, loop size 15mm Pulling Fiber: White-Blue, Flipping Fiber: Green
- BAK-7001C.20 ONButton CL® Fixation Button, loop size 20mm Pulling Fiber: White-Blue, Flipping Fiber: Green
- BAK-7001C.25 ONButton CL® Fixation Button, loop size 25mm Pulling Fiber: White-Blue, Flipping Fiber: Green
- BAK-7001C.30 ONButton CL® Fixation Button, loop size 30mm Pulling Fiber: White-Blue, Flipping Fiber: Green
- BAK-7001C.35* ONButton CL® Fixation Button, loop size 35mm Pulling Fiber: White-Blue, Flipping Fiber: Green





ACL-PCL RECONSTRUCTION

BIOTWIN™ Biocomposite Interference Screw



Ordering Information

BT11CPVI0720	BIOTWIN™ Composite Interference Screw 7*20mm
BT08CPVI0725	BIOTWIN™ Composite Interference Screw 7*25mm
BT08CPVI0730	BIOTWIN™ Composite Interference Screw 7*30mm
BT11CPVI0820	BIOTWIN™ Composite Interference Screw 8*20mm
BT08CPVI0825	BIOTWIN™ Composite Interference Screw 8*25mm
BT08CPVI0830	BIOTWIN™ Composite Interference Screw 8*30mm
BT11CPVI0920	BIOTWIN™ Composite Interference Screw 9*20mm
BT08CPVI0925	BIOTWIN™ Composite Interference Screw 9*25mm
BT08CPVI0930	BIOTWIN™ Composite Interference Screw 9*30mm
BT12CPVI1025	BIOTWIN™ Composite Interference Screw 10*25mm
BT08CPVI1030	BIOTWIN™ Composite Interference Screw 10*30mm
BT15CPVI1135	BIOTWIN™ Composite Interference Screw 11*35mm
BT15CPVI1235	BIOTWIN™ Composite Interference Screw 12*35mm

SOFTFIX-PK® PEEK Interference Screw



Ordering Information

BAK-7165.23	SOFTFIX-PK® Interference screw, cannulated, roundhead; Dia. 6.0mm, Len. 23mm
BAK-7166.23	SOFTFIX-PK® Interference screw, cannulated, roundhead; Dia. 7.0mm, Len. 23mm
BAK-7166.28	SOFTFIX-PK® Interference screw, cannulated, roundhead; Dia. 7.0mm, Len. 28mm
BAK-7167.23	SOFTFIX-PK® Interference screw, cannulated, roundhead; Dia. 8.0mm, Len. 23mm
BAK-7167.28	SOFTFIX-PK® Interference screw, cannulated, roundhead; Dia. 8.0mm, Len. 28mm
BAK-7168.23	SOFTFIX-PK® Interference screw, cannulated, roundhead; Dia. 9.0mm, Len. 23mm
BAK-7168.28	SOFTFIX-PK® Interference screw, cannulated, roundhead; Dia. 9.0mm, Len. 28mm
BAK-7168.35	SOFTFIX-PK® Interference screw, cannulated, roundhead; Dia. 9.0mm, Len. 35mm
BAK-7169.28	SOFTFIX-PK® Interference screw, cannulated, roundhead; Dia. 10.0mm, Len. 28mm
BAK-7169.35	SOFTFIX-PK® Interference screw, cannulated, roundhead; Dia. 10.0mm, Len. 35mm
BAK-7170.35	SOFTFIX-PK® Interference screw, cannulated, roundhead; Dia. 11.0mm, Len. 35mm





ACL-PCL RECONSTRUCTION

BT-FIX

Adjustable Fiber Loop for Attachable Button System



Ordering Information

10049 BT-FIX Adjustable Fiber Loop for Attachable Button System

SMARTFIX

Tibial Base Plates



Ordering Information

BAK-7221S SMARTFIX, Tibial Base Plate, Size Medium

BAK-7222S SMARTFIX, Tibial Base Plate, Size Large





ACL-PCL RECONSTRUCTION

MR-FIX Fixation Button



MR-FIX Fixation Button



Ordering Information

10119 MR-FIX Tapered Round Fixation Button

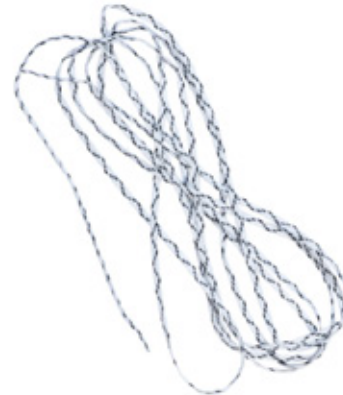
PIVOT-FIX™ Fixation Button



Ordering Information

BAK-7002PF PIVOT-FIX™ Flat round Fixation Button

BIOFIBER® Tape



ONButton EX™ Fixation Button



Ordering Information

10093 ONButton EX™ Fixation Button

ONBUTTON™ Fixation Button



Ordering Information

BAK-7001 ONButton™ Fixation Button

Ordering Information

10119 MR-FIX Tapered Round Fixation Button

10290 BioFiber® Fiber Tape, size 1.1 White-Black, Len. 38"

10291 BioFiber® Fiber Tape, size 1.1 Blue-Black, Len. 38"

BF-2W BioFiber® Fiber USP Size 2 with MO-6 needle White, Len. 36"

BF-2WC BioFiber® Fiber USP Size 2 with MO-6 needle White-Blue, Len. 36"





ACL-PCL RECONSTRUCTION

STAYFIX®

Spiked Ligament staple



Ordering Information

BAK-7013S STAYFIX® Spiked Ligament staple, Size Small

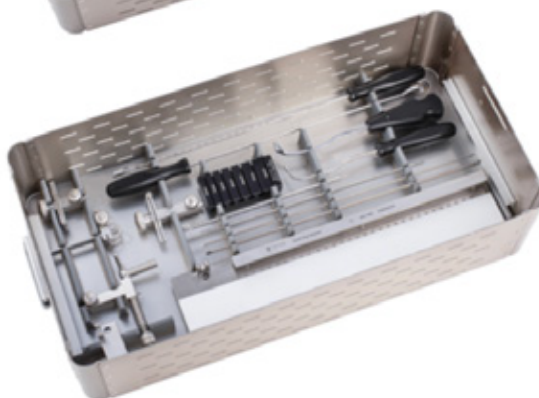
BAK-7015S STAYFIX® Spiked Ligament staple, Size Large





KNEE SPORTS MEDICINE

ACL-PCL Reconstruction Instrumentation





MENISCUS REPAIR

BIOCINCH® Inside-Out



Ordering Information

- BAK-7196 BIOCINCH® Meniscal repair set with needles Fiber USP Size 2-0, suture Len. 75cm straight needles-2 units, needle Len. 25cm
- BAK-7216 BIOCINCH® Meniscal repair set with needles Fiber USP Size 0, suture Len. 75cm straight needles-2 units, needle Len. 25cm
- 10068 Biofiber Fiber USP Size 2-0 White, Len. 75cm
- 10069 Biofiber Fiber USP Size 0 White, Len. 75cm
- 10206 Biofiber Fiber USP Size 2-0 White-Blue, Len. 75cm
- 10207 Biofiber Fiber USP Size 0 White-Blue, Len. 75cm
- 10390 BioFiber® Fiber USP Size 2-0 White-Black, Len. 75cm
- 10389 BioFiber® Fiber USP Size 0 White-Black, Len. 75cm

BIOCINCH®- AI2 All Inside



Ordering Information

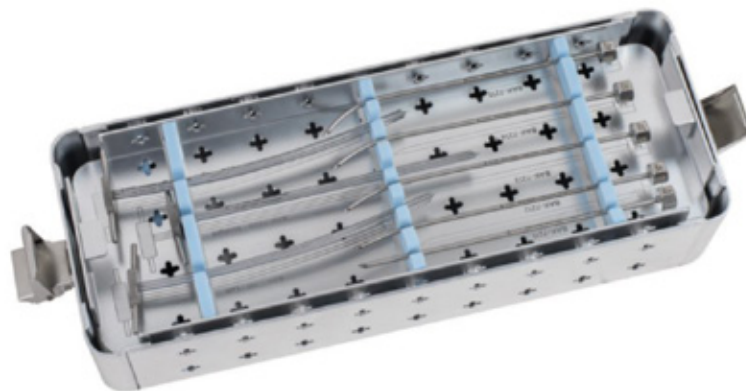
- BAK-7142 BIOCINCH®-AI2 Meniscal repair set, Fiber USP Size 2-0, Reverse Curved
- BAK-7004 BIOCINCH®-AI2 Meniscal repair set, Fiber USP Size 2-0, Straight
- BAK-7005 BIOCINCH®-AI2 Meniscal repair set, Fiber USP Size 2-0, Curved





MENISCUS REPAIR

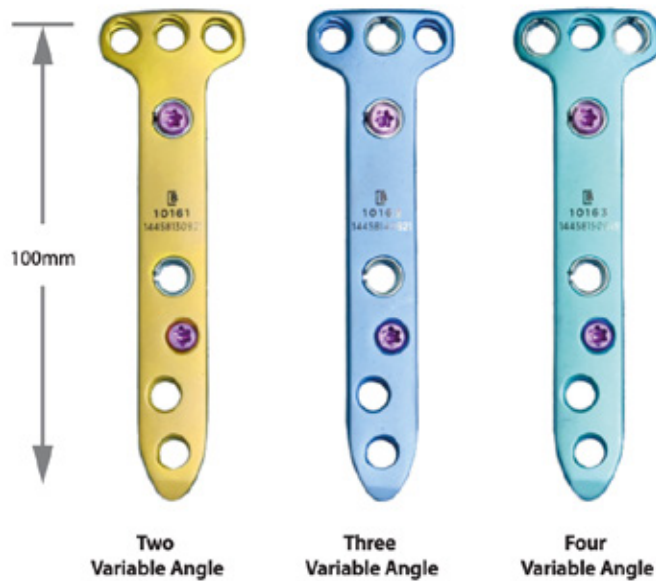
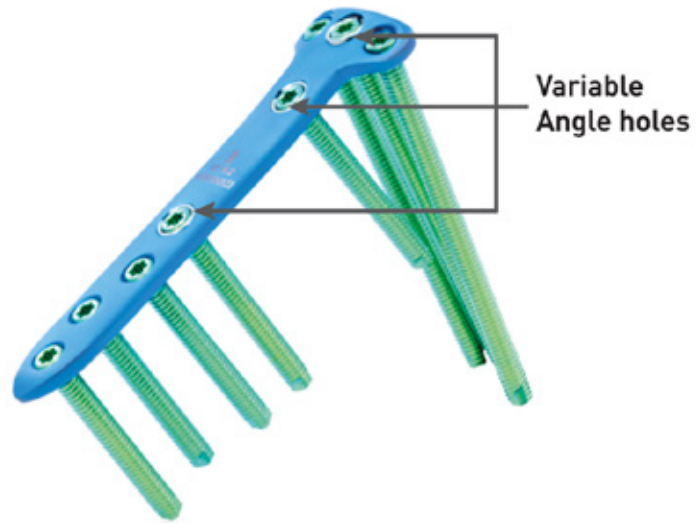
BIOCINCH[®] Meniscus Repair Instrumentation





HIGH TIBIAL OSTEOTOMY

BioFix™-NP (Variable Angle - Narrow Profile)





PROTESA
Medical supplies

Matriz

Blvd. de los Reyes 6204. Int 202.
San Bernardino Tlaxcalancingo,
San Andrés Cholula, Pue.

 222 434 0634

 www.grupoprotesa.mx